

OPUS line



OPUS F50

PC Setup programmable features

1. Lock features

The PC software is necessary to initially specify if the duress alarm, the dual code, the Timedelay override (for user 49) and the open device features are required or not. It also allows limiting the number of programmable users and setting the time Delay.

NB: The individual users have to be individually entered by the manager up the number that has been allowed through the PC.

The Time delay can be modified through the keypad by the manager.

Setup Ser44 Supra for F50

Mode

- Duress alarm
- Dual combo
- Override
- Open Device

SN #

Active

Fixed:

Var.:

ID #

Master:

Time delay

Delay: min.

O.W.: min.

#	Status	Combo
➔ Manager	Installed	111111
2	Deleted	222222
3	Deleted	030303
4	Deleted	040404
5	Deleted	050505
6	Deleted	060606
7	Deleted	070707
8	Deleted	080808
9	Deleted	090909
10	Deleted	101010
11	Deleted	111111
12	Deleted	121212
13	Deleted	131313
14	Deleted	141414
15	Deleted	151515

Open

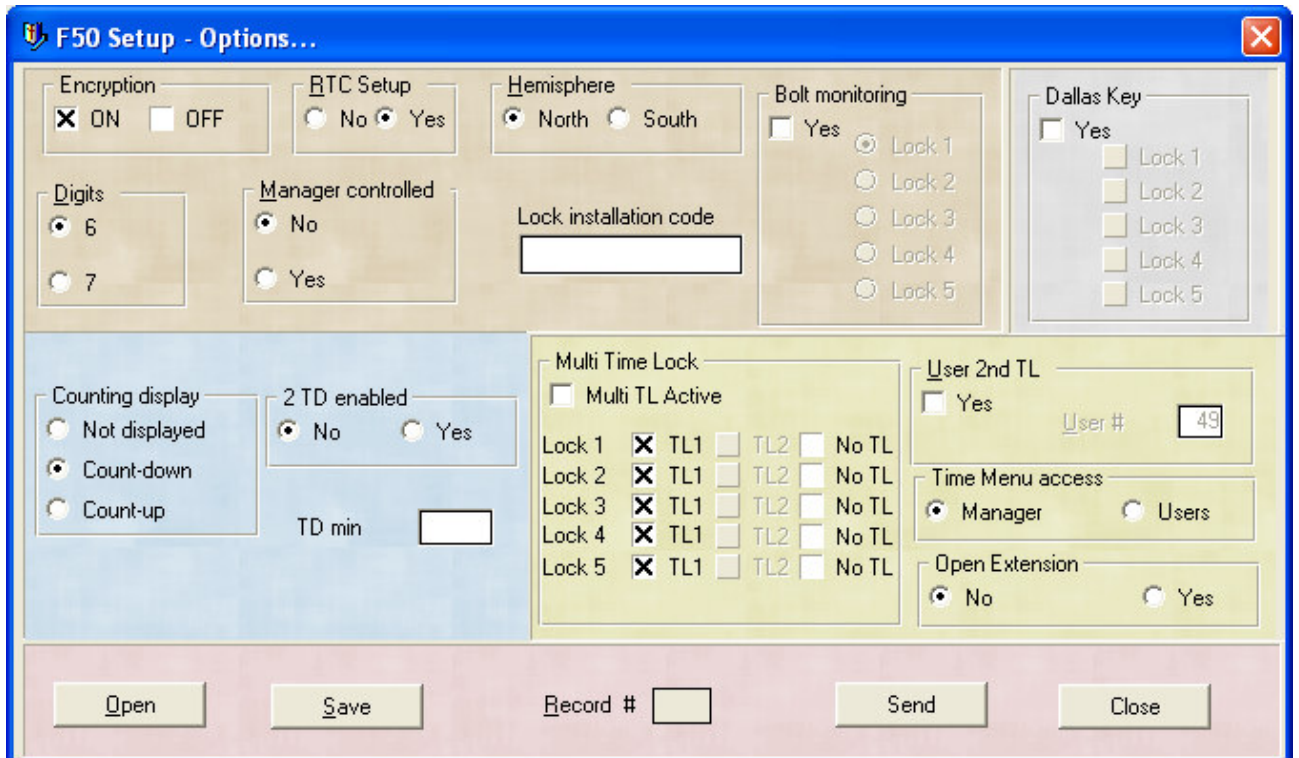
Save

Send

Close

2. Entry unit features

All the below features are usually factory programmed, based on the customer's specifications



3. Timelock program (can be programmed through the keypad)

